

SCCPCI6U-5

6U CompactPCI Starter Cage (5 slot)



Features

- Backplane complies with PICMG 2.0 CPCI Core Specification, PICMG 2.1 Hot Swap Specifications and PICMG 2.9 System Management Specifications
- Five 6U CPCI slots
- 300W auto-ranging Power Supply
- Adjustable forced-air cooling
- Configurable rear and front I/O panels
- Removable side panels
- System reset switch

The SCCPCI6U-5 CompactPCI Starter Cage from GE Intelligent Platforms provides a flexible, cost-effective platform designed to support GEIP's latest 6U modules. The platform is suitable for hardware and software evaluation plus higher levels of integration, test and demonstration.

GEIP's range of Starter Cages allow system integrators to evaluate products in a laboratory environment, secure in the knowledge that the same cards can be ordered in different ruggedization styles to meet the demands of many deployed environments, from benign air cooled, to fully rugged conduction cooled.

The SCCPCI6U-5 comprises a 5-slot backplane, card cage, PSU, cooling fan, provision for auxiliary storage and all internal power wiring.

The card cage incorporates guide rails and alignment keys on the backplane to assist with correct board insertion. Once installed, cards can be firmly secured by front panel fixing screws. Cooling is by push convection, using a fan at the bottom of the card cage. Airflow is adjustable by a front panel knob.

With the boards accessible from the front of the enclosure, to allow easy access to rear I/O, the area behind the entire backplane is kept free. This allows easy fitting of GEIP's range of Rear Transition Modules (RTMs) and any associated cabling.

Specifications

Form Factor

- 7U height
- 84HP width

Cooling

- The chassis includes a 127 CFM fan below the card edge to force air over the boards

6U CPCI Backplane

- 5-slot 6U CPCI
- 0.8" pitch slot width

Rear I/O

- Each board has slots for Rear Transition Modules (RTMs) to break out into standard commercial connectors

Temperature

- The chassis is designed for benign lab use only

Hard Drive connectivity

- The chassis provides a bundle of auxiliary power connectors for powering up to four external IDE hard disk drives and up to two SATA devices. These are available in the base of the chassis as a loose wiring harness.

Dimensions

- 254mm x 513mm x 299mm (WxHxD)
- Weight 10.8 Kg (22.5 lbs.)

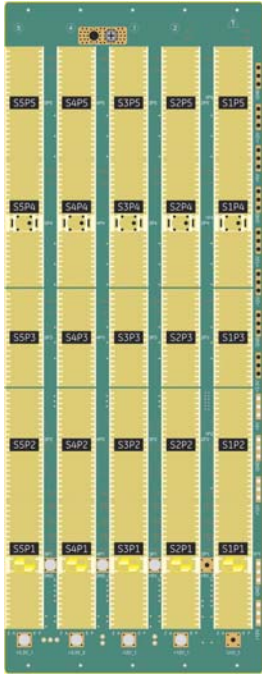
PSU Output Capacities

Output Voltage	SCCPCI6U-5 Reference	Maximum Load (Amps)
+12V	Vs1	17
+3.3V	Vs2	18
+5V	Vs3	20
+12V	P12V_AUX	17
-12V	N12V_AUX	0.8
+5VSTBY	P3V3_AUX	2.5

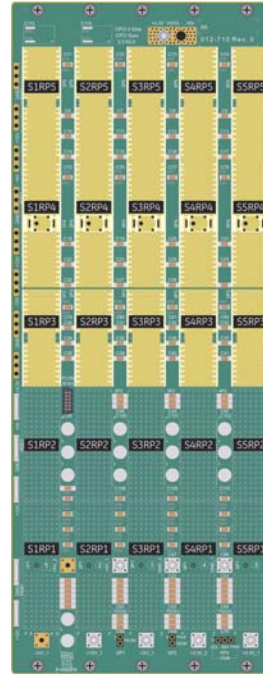


6U CPCI Starter Cage

Diagrams



Backplane Layout – Front Connector Positions



Backplane Layout – Rear Connector Positions



About GE Intelligent Platforms

GE Intelligent Platforms, a General Electric Company (NYSE: GE), is an experienced high-performance technology company and a global provider of hardware, software, services, and expertise in automation and embedded computing. We offer a unique foundation of agile, advanced and ultra-reliable technology that provides customers a sustainable advantage in the industries they serve, including energy, water, consumer packaged goods, government and defense, and telecommunications. GE Intelligent Platforms is a worldwide company headquartered in Charlottesville, VA and is part of GE Home and Business Solutions. For more information, visit www.ge-ip.com.

GE Intelligent Platforms Contact Information

Americas: **1 800 433 2682** or **1 434 978 5100**

Global regional phone numbers are listed by location on our web site at defense.ge-ip.com/contact

defense.ge-ip.com



©2012 GE Intelligent Platforms. All Rights Reserved.
All other brands or names are property of their respective holders.
Specifications are subject to change without notice.