



SCVPX3U-12

3U VPX Starter Cage (12 slot)

The SCVPX3U-12 VPX starter cage from Abaco Systems provides a flexible, cost-effective platform designed to support Abaco Systems' latest 3U VPX modules. The platform is suitable for software development, integration, and test of VPX board level modules.

Abaco Systems' range of circuit card assemblies (CCAs) are designed for use in a variety of convection, conduction and airflow-through module build styles. System integrators can develop and field-test this platform, secure in the knowledge that the same cards used in the laboratory and field demonstrations can be ordered in different build styles as required to meet the environmental requirements of a range of airborne, ground and naval platforms.

The SCVPX3U-12 comprises a 12-slot backplane, card cage, PSU, cooling fans, provision for auxiliary storage and all internal power wiring.

The card cage incorporates guide rails and alignment keys on the backplane to assist with correct board insertion. Once installed, cards can be firmly secured by front panel fixing screws. Cooling is by push convection, using fans at the bottom of the card cage. Airflow is adjustable by a front panel knob.

With the boards accessible from the front of the enclosure, to allow easy access to rear I/O, a 6U area behind the entire backplane is kept free. This allows easy fitting of Abaco Systems' range of rear transition modules (RTMs) and any associated cabling.

FEATURES:

- Twelve 3U VPX slots
- IEEE Std 1101.10-compliant card frame
- 700W auto-ranging power supply
- Adjustable forced-air cooling
- 19" rack mount provision
- Folding handle for transportation

SCVPX3U-12 3U VPX Starter Cage (12 slot)

Specifications

Form Factor

- 7U height
- 95HP width

Cooling

- The chassis includes three 150 CFM fans below the card edge to force air over the boards

3U VPX Backplane

- 12-slot 3U VPX
- 1" pitch slot width

Rear I/O

- Each board has slots for Rear Transition Modules (RTMs) to break out into standard commercial connectors

Temperature

- Chassis is designed for benign lab use only

Hard Drive connectivity

- The chassis provides two 6U x 8HP peripheral shuttles. Each shuttle allows two 3.5" hard drives to be fitted. A power harness is also included to provide power to each drive.

Dimensions (WxHxD)

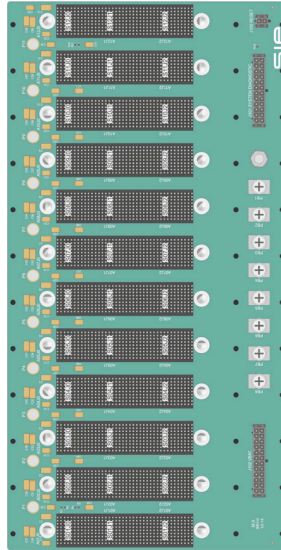
- 482.6 mm x 333.2 mm x 337.6 mm
- Weight 12.00 Kg (26.5 lbs.)

PSU Output Capacities

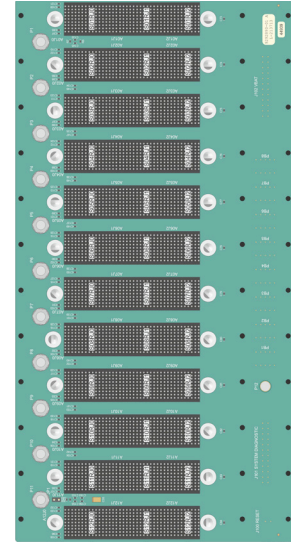
Output Voltage	SCVPX3U-12 Reference	Max. Load (Amps)	Max. Output (Watts)
+12V	Vs1, P12V_AUX	17	204
+3.3V	Vs2, P3V3_AUX	40	132
+5V	Vs3	80	400
-12V	N12V_AUX	8.5	102

Block diagram

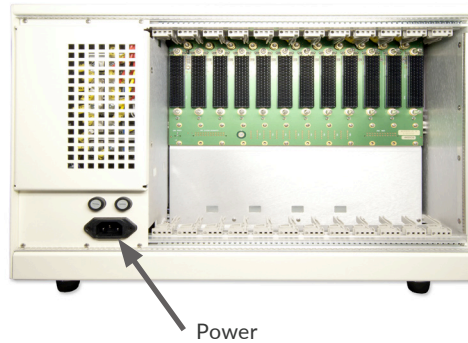
Backplane Layout (Front)



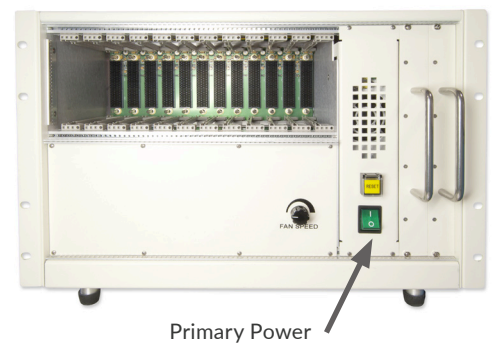
Backplane Layout (Rear)



Rear View



Front View



Ordering information

Nested

WE INNOVATE. WE DELIVER. YOU SUCCEED.

Americas: 866-OK-ABACO or +1-866-652-2226 Asia & Oceania: +81-3-5544-3973

Europe, Africa, & Middle East: +44 (0) 1327-359444

Locate an Abaco Systems Sales Representative visit: abaco.com/products/sales

abaco.com @AbacoSys

©2016 Abaco Systems. All Rights Reserved. All other brands, names or trademarks are property of their respective owners. Specifications are subject to change without notice.

